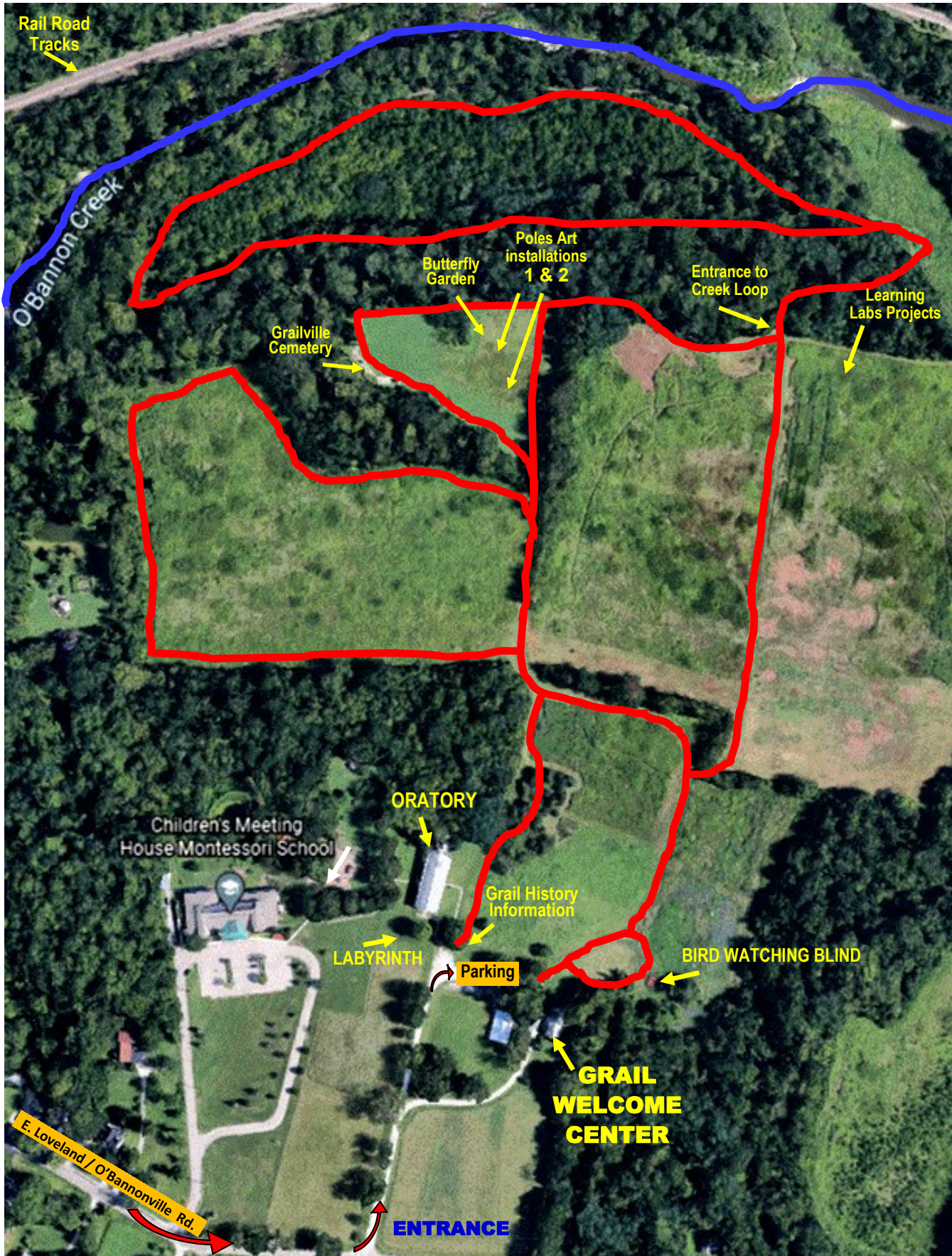




# North Trail



**TRAIL**  
O'Bannon  
Creek

*Trails descend down to the creek. Consider this with regard to incline upon returning to Welcome center.*



**Address for Emergency / 911: 931 O'Bannonville Rd. Loveland, OH 45140**





***“Called by our spiritual values, the Grail envisions a world of peace, justice and renewal of the earth, brought about by racially and ethnically diverse women working together as catalysts for change.”***

- The Grail is an international women’s movement embracing women of any age, ability, faith tradition, ethnicity, race, gender or sexuality.
- We are committed to spiritual search, social transformation, environmental sustainability, and the release of women’s creative energy throughout the world.
- We are bonded in action, solidarity, and faith, working in 17 countries, as individuals and Grail groups, interconnecting regionally, nationally, and internationally.
- Women of the Grail work on a wide variety of issues, together and with non-Grail members.
- The Grail in the US is a movement where all members are encouraged to advance our shared vision in the manner that best befits their interests, abilities, and the needs of their community. We are individual threads that together weave a tapestry.
- The International Grail has had NGO Observer status at the United Nations as part of UFER since 1953, and Special Consultative status through ECOSOC since 1998. Therefore, our US Grail members—while acting in small groups or independently—frame activities under the United Nations Sustainable Development Goals.
- The trails are dog friendly! Please follow our posted rules regarding our furry friends.

### ***Welcome to The Grail in the US!***

Our trails\* and labyrinth are open year-round during DAYLIGHT hours free of charge. As you walk the unpaved trails, keep watch for wildlife, art, and environmental sustainability projects. Many of these are marked by white and blue signs, like edible forest, monarch butterfly garden, water conservation area.

You may see indicators of deer, turkeys, coyote and maybe even a bobcat! The Ohio [Department of Natural Resources](http://wildlife.ohiodnr.gov) has downloadable guides and [iNaturalist.com](http://iNaturalist.com) has a mobile app that can also record sightings and crowdsource IDs. We are on the [Cornell Lab of Ornithology’s APP](#) too!

Grailville is home to a wide variety of birds—some like the Green Heron are quite uncommon! You can add your bird sighting to the Grailville list on eBird.com. The [Merlin Bird ID App](#) is a great tool in locating birds.

**(<http://wildlife.ohiodnr.gov>)**

***\*Please note when walking our trails that the elevation descends to the creek, so the return is all uphill.***